



NOZZLES AND ACCESSORIES

Nozzles

Principle

VYR nozzles have been specially developed for high pressure misting. They are particularly efficient for applications such as outdoor cooling, humidification, settling down of dust, and odor control.

Their easy use makes them very appreciated by professionals.

These nozzles can be equipped with an anti-drip device, with a spring and a valve, for a better efficiency.



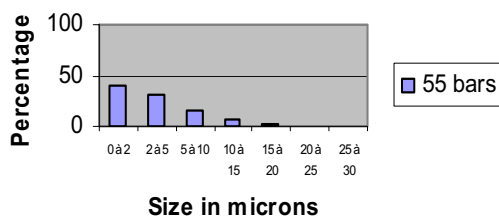
Technical specifications

- Central body and internal turbine in stainless steel 303.
- For the exterior part, **2 versions** :
 - Brass
 - stainless steel 303
- Dynamic nozzle equipped with a central stainless steel rotor.
- Diffusion cone : 55 to 80 degrees, depending on the pressure.
- Pressure of use 3 to 70 bars (droplets down to a few microns).
- Sealing by O ring.
- Central machining by laser

Advantages :

- High speed of water expelling for a very low flow output of water.
- The rotor ensures a better diffusion of water than the classical static nozzles.
- A very low water flow for a big air volume treated.
- A very fine atomization of water allowing a near to instantaneous evaporation and therefore generating a maximized "Clim" cooling effect.
- These nozzles are specially designed for misting.
- Mounting and dismounting can be done without any tools.
- Sealing by O ring.
- Easy identification by colored O-rings.

B02 nozzles
Distribution of droplets



Designation	Code Brass version	Code Stainless Steel version	Diam. Of the Orifice (mm)	Color of the O ring	Flow At 50 bars (l/min)
Nozzle B00 (Yellow)	60.00205	60.00206	0,15	yellow	0,05
Nozzle B01 (Red)	60.00210	60.00211	0,2	Red	0,08
Nozzle B02 (Black)	60.00220	60.00221	0,3	Black	0,11
NozzleB03 (Brown)	60.00230	60.00231	0,4	Brown	0,15
NozzleB04 (Green)	60.00240	60.00241	0,5	Green	0,20

Accessories



Designation	Code brass	Code Stainless steel	Description
Nozzle plug BB	60.00250		To be mounted on a Tee support of nozzle. Allowing a simple closing of an outlet
Anti-drip AG1	60.00260	60.00261	To be mounted between the nozzle and its Tee support. Includes a spring valve. Shuts down at pressure of about 5 bars.
O-ring for nozzle	60.00100	New !	
Rubber Ball Stems	60.00101	New !	
Anti drip spring	60.00102	New !	
Auto release drain valve AG2	60.00270	60.00271	To be mounted on a Tee support of nozzle, at the lower part of the installation. Includes a spring valve. Opens at a pressure of 5 bars to empty out the circuit.
Extender 6cm	60.00410		Fix brass extender
Extender 20cm	60.00420		A form memory copper tube. To be mounted between the nozzle and its Tee support.
Extender 40cm	60.00430		A form memory copper tube. To be mounted between the nozzle and its Tee support.
Extender 60cm	60.00440		A form memory copper tube. To be mounted between the nozzle and its Tee support.
Extender 80cm	60.00450		A form memory copper tube. To be mounted between the nozzle and its Tee support.



FITTINGS AND NYLON TUBE

Quick Fittings

Thanks to a joint development between **VYR** and **Camozzi**, world leader of quick fittings, connections in pneumatic and hydraulic applications. After a study of the activity sector of fluids, the quick fitting system, with double sealing "special for misting applications" was borne and with an exclusivity for VYR.

The main features of this fitting is having two extra sealing O rings (patented system) which guaranties an upgrading of the sealing and maximizing the cleanness by preventing any impurities from getting in or out..

The quick fittings with the double sealing system exist in seven models. The action of connecting and disconnecting from the tube can be repeated many times without altering the performances of the fitting and will not jeopardizing the tightness of the sealing. These operations can be done without using any tools, resulting in time and money saving during the mounting operations or during maintenance periods .

If necessary, the O rings can be easily replaced.



Simple coupling
JA



screwed Tee for nozzle
holder TBA



Elbow CA



Tee TA



End of line stopper
BA



Straight end of line
connector
EA



Base for 5 nozzles
EMB1



End-line nozzle
holder EA



Base for 5 nozzles
EMB2

Designation	Code
TBA Screwed Tee for nozzle holder	60.00310
JA Simple coupling	60.00320
CA Elbow	60.00330
TA Tee	60.00340
BA End line cap	60.00370
EA Straight end of line connector 8 x 1/4"M.	60.00350
EA End-line nozzle holder	60.00380
EMB1 Base for 5 nozzles (To be crewed on straight end of line connector)	60.00360
EMB2 Base for 5 nozzles (To be fixed on a screw Tee, nozzle holder).	60.00365



Material	Brass body O-ring NBR
Connection	Cylindrical Gas ISO 228 (BSP)
Pressure	min. 0,9 - max. 60 bars
Tubing used	Polyamide (PA) 6-11-12 Polyurethane (PU)
Diameter	8
Fluids	All types of fluids needing a high sealing degree such as water, oil. For any other fluid, please contact our technical department.
Temperature	-20°C/ +100°C (in the limit of maximal authorized operating pressure).